



SUPERIOR Internal

U P V c D O O R S

stylish and maintenance free

NEVER NEED
TO PAINT

NEW colours



SLATE GREY



CHARTWELL GREEN



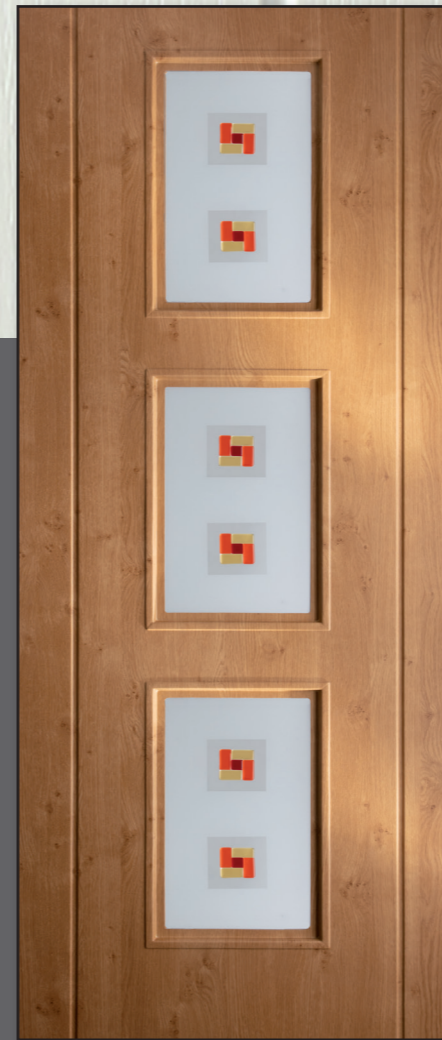
IRISH OAK



BLACK



ANTHRACITE GREY



ARRAN - ????



ARRAN - Solid

The Internal UPVc Collection

TIC SKIN

ARRAN

NEW to the range



ARRAN - ???



ARRAN - ???

ARRAN DOOR SIZES

Width - min: 560mm max: 864mm
Height - min: 1830mm max: 2070mm

5 COLOUR OPTIONS

one

two

The Internal UPVc Collection

JURRA - Glazed

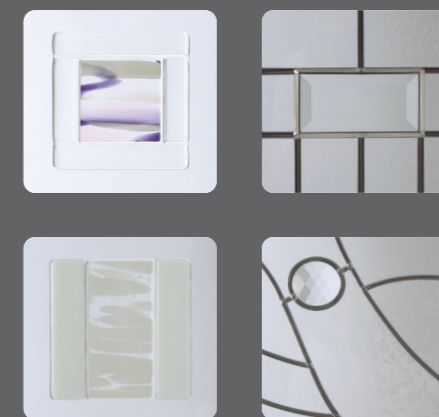


TIC SKIN

*NEW
to the
range*

CHARLOTTE - Abstract

A new modern addition to the internal door collection.

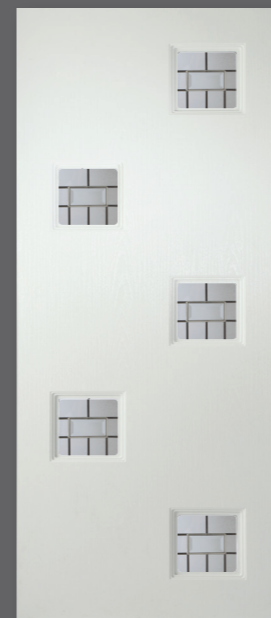


JURRA

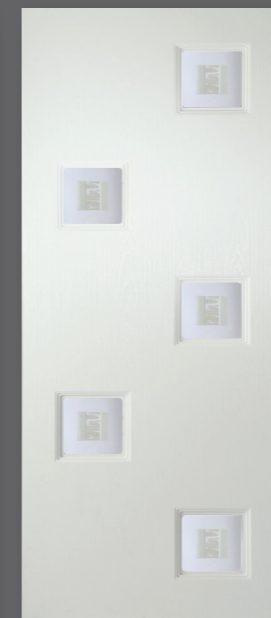
CHARLOTTE



JURRA - Solid



CHARLOTTE - Prairie



CHARLOTTE - Fusion 2



CHARLOTTE - Fusion 3

CHARLOTTE DOOR SIZES

Width - min: 685mm max: 864mm
Height - min: 1830mm max: 2070mm

three

JURRA DOOR SIZES

Width - min: 510mm max: 864mm
Height - min: 1830mm max: 2070mm

four

The Internal UPVc Collection

TIC SKIN



OAKLEY - Solid



OAKLEY - Glazed



GRETNA - Harris

Gretna & Gretna Centre - Two stunning additions to the internal door range.



GRETNA - Finlay



GRETNA - Solid



HIGHLAND - Solid



HIGHLAND - Sandblast vertical lines



GRETNA CENTRE - Ceres



GRETNA CENTRE - Lea

OAKLEY DOOR SIZES

Width - min: 610mm max: 864mm
Height - min: 1830mm max: 2070mm

HIGHLAND DOOR SIZES

Width - min: 510mm max: 864mm
Height - min: 1830mm max: 2070mm

GRETNA DOOR SIZES

Width - min: 520mm max: 864mm
Height - min: 1830mm max: 2070mm

OAKLEY

HIGHLAND

GRETNA

GRETNA CENTRE

five

six

The Internal UPVc Collection

ALEXANDER - Clova
Bold, cutting edge and vibrant.



TIC SKIN



ALEXANDER - Solid

KIELDER - Fearn
Designed with maximum light in mind.



KIELDER - Solid



ALEXANDER - Tay



ALEXANDER - Sandblast Border



KIELDER - Bora



eight

seven

ALEXANDER DOOR SIZES

Width - min: 560mm max: 864mm
Height - min: 1800mm max: 2070mm

KIELDER DOOR SIZES

Width - min: 560mm max: 864mm
Height - min: 1800mm max: 2070mm

ALEXANDER

KIELDER

The Internal UPVc Collection

GEMINI - Prism

Designed to work perfectly in a French door combination as well as a single door.



Gemini - Solid



GEMINI - Twilight



PISCES - Abstract

Modern, elegant and stunning in its concept.



PISCES - Solid



PISCES - Rose

GEMINI

PISCES



GEMINI FRENCH DOORS - Prism



GEMINI FRENCH DOORS - Discus



GEMINI - Discus



CAROLINA - Solid

CAROLINA - Solid

A Modern contemporary addition to our range of solid doors.



CAROLINA

nine

GEMINI DOOR SIZES

Width - min: 560mm max: 864mm
Height - min: 1850mm max: 2070mm

PISCES DOOR SIZES

Width - min: 560mm max: 864mm
Height - min: 1850mm max: 2070mm

CAROLINA DOOR SIZES

Width - min: 420mm max: 864mm
Height - min: 1830mm max: 2070mm

ten

The Internal UPVc Collection

CAIRNGORM - Linton
 Bold and exciting.
 Designed to make a statement.



TIC SKIN



CAIRNGORM - Solid



CAIRNGORM - Clematis

LOMOND - Diamonds
 A variation on the Thistle allowing additional light.



LOMOND - Solid



LOMOND - Jewelled Vine



THISTLE - Alexandria



THISTLE - Rhu



THISTLE - Solid

THISTLE
 A simple and effective variation on the cairngorm.



SELKIRK - Solid

SELKIRK
 A design allowing maximum light with maximum style.



SELKIRK - Sandblast Prestwick



SELKIRK - Sandblast Ayr

DOOR SIZES

CAIRNGORM

Width - min: 560mm max: 864mm
 Height - min: 1880mm max: 2070mm

THISTLE

Width - min: 560mm max: 864mm
 Height - min: 1880mm max: 2070mm

LOMOND

Width - min: 560mm max: 864mm
 Height - min: 1880mm max: 2070mm

SELKIRK

Width - min: 560mm max: 864mm
 Height - min: 1880mm max: 2070mm

CAIRNGORM

THISTLE

LOMOND

SELKIRK

eleven

twelve

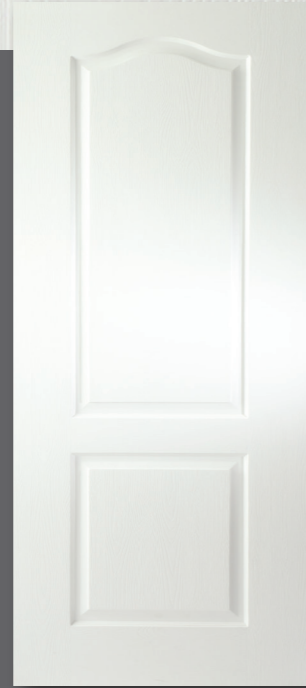
The Internal UPVc Collection

CLASSIC

GRAIN SKIN



CLASSIC 2 - Starburst
 One of our most popular designs featuring glass levels & leadwork.
 Also available as a Classic 1.



CLASSIC - Solid



CLASSIC 1 - Sandblast Floral Brocade



CLASSIC 1 FRENCH DOORS - Sandblast Mackintosh



CLASSIC 1 - Sandblast Mackintosh



CLASSIC 1 - Sandblast Starburst



CLASSIC 1 - Diamond Sparkle



CLASSIC 1 - Galaxy



CLASSIC 1 - Georgian Lead



CLASSIC 1 - Obscure Glass



CLASSIC 1 - Bespoke Glass



CLASSIC 1 - Fusion (Blue)



CLASSIC 1 - Rose Sash



CLASSIC 1 - Rennie Mackintosh

thirteen

CLASSIC DOOR SIZES

Width - min: 510mm max: 850mm
 Height - min: 1830mm max: 2060mm

fourteen

The Internal UPVc Collection

GRAINGER

GRAIN SKIN



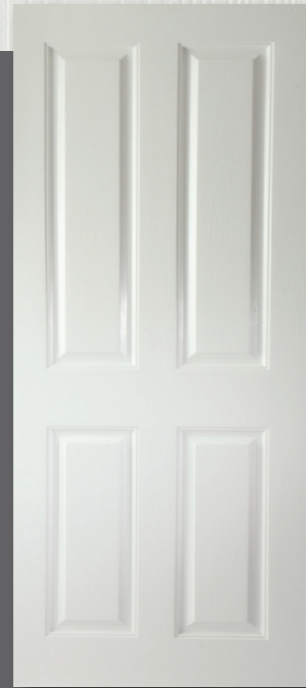
GRAINGER 2 - Callini

A more intricate sandblast design with a choice of coloured bevels.



GRAINGER 2 - Sandblast Beaumont

One of our new range of contemporary sandblasted glass designs.



GRAINGER 2 - Solid



GRAINGER 2 - Abstract Dingwall



GRAINGER 2 FRENCH DOORS - Decra Resin 1



GRAINGER 2 - Campsie



GRAINGER 2 - Black Fusion



GRAINGER 2 - Decra Resin 2



GRAINGER 2 - Fusion 2 Blue
Also available in Green, Red and Black.



GRAINGER 2 - Sandblast Bo'ness



GRAINGER 2 - Sandblast Mackintosh



GRAINGER 2 - Sandblast Border



GRAINGER 2 - Victoriana



GRAINGER 2 - Sandblast Argyle



GRAINGER 2 - Sandblast Bancroft

fifteen

GRAINGER DOOR SIZES

Width - min: 650mm max: 850mm
Height - min: 1855mm max: 2060mm

sixteen

The Internal UPVc Collection



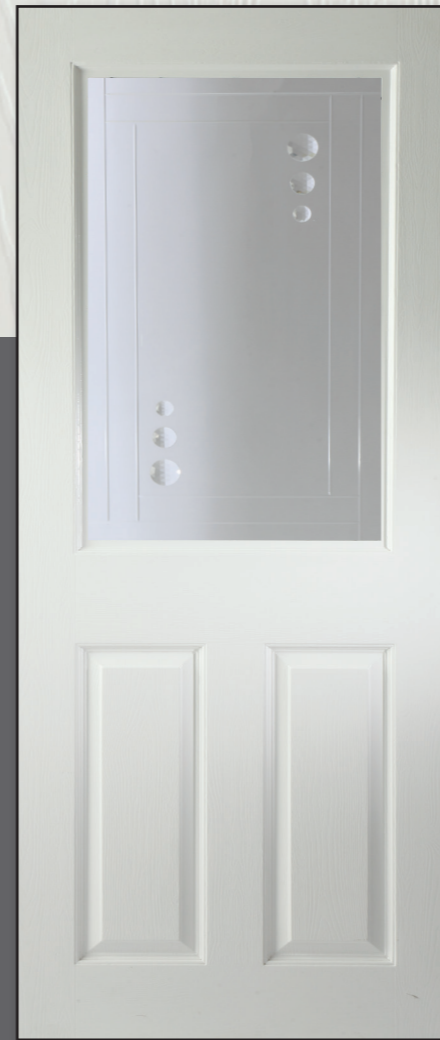
GRAINGER 2 - Sandblast Emerald
Sandblasted glass design with fusion tile. Also available in Blue, Red and Black.



GRAINGER 2 - Kinross Blue
Also available in Green, Red, Black and Clear.



GRAINGER 2 - Troon



ELDON - Crystal Jewel
This modern design is made using straight crystal cut lines and faceted polished glass jewels onto clear glass.



ELDON - Sandblast Water Dragon



ELDON - Sandblast Radial

GRAINGER

ELDON

GRAIN SKIN

GRAIN SKIN



GRAINGER 2 - Sandblast Element



GRAINGER 2 - Sandblast Kincaid



GRAINGER 2 - Sandblast Mansfield



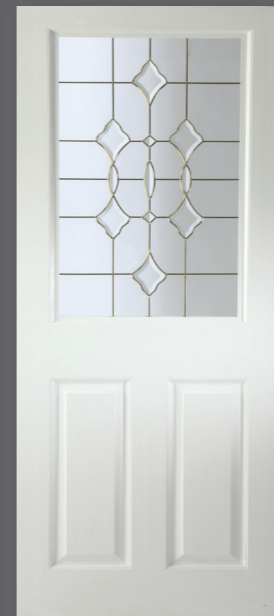
GRAINGER 2 - Ebony Jet



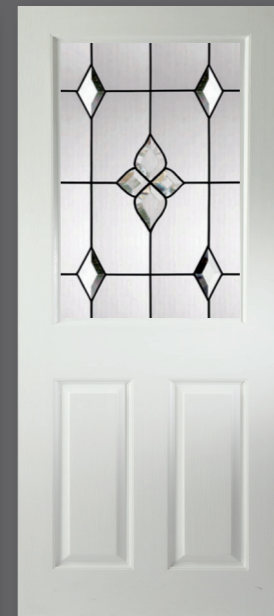
GRAINGER 2 - Denny



ELDON - Galaxy



ELDON - Andromeda



ELDON - Expression



ELDON - Victoriana



ELDON - Decra Fusion 1

seventeen

GRAINGER DOOR SIZES

Width - min: 650mm max: 850mm
Height - min: 1855mm max: 2060mm

Sandblast designs predominately opaque, can be reversed.

ELDON DOOR SIZES

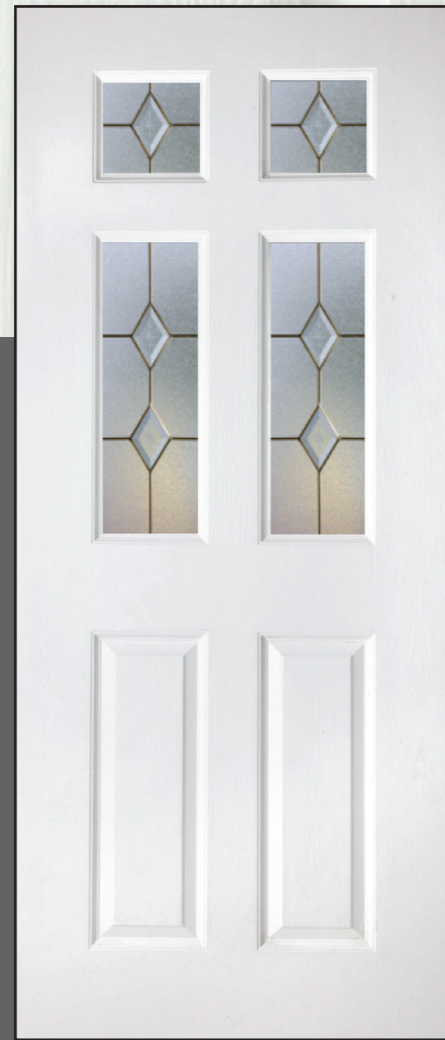
Width - min: 710mm max: 850mm
Height - min: 1855mm max: 2060mm

eighteen

The Internal UPVc Collection

WASHINGTON 4 - Diamond Bevels on Stippolyte

A traditional design using lead and diamond bevels onto an obscure style glass.



GRAIN SKIN



WASHINGTON - Solid



CONTEMPORARY - Mackintosh Nairn

This stunning door features a modern Rennie Mackintosh influenced glass design.

TIC SKIN



CONTEMPORARY - Solid



CONTEMPORARY - Leven



WASHINGTON 2 - Sandblast Border



WASHINGTON 4 - Decra Resin



WASHINGTON - Bi-Fold



CONTEMPORARY - Abstract Forfar



CONTEMPORARY - Oban



CONTEMPORARY - Elgin



CONTEMPORARY - Dunoon

WASHINGTON

CONTEMPORARY

nineteen

WASHINGTON DOOR SIZES

Width - min: 610mm max: 850mm
Height - min: 1855mm max: 2060mm

twenty

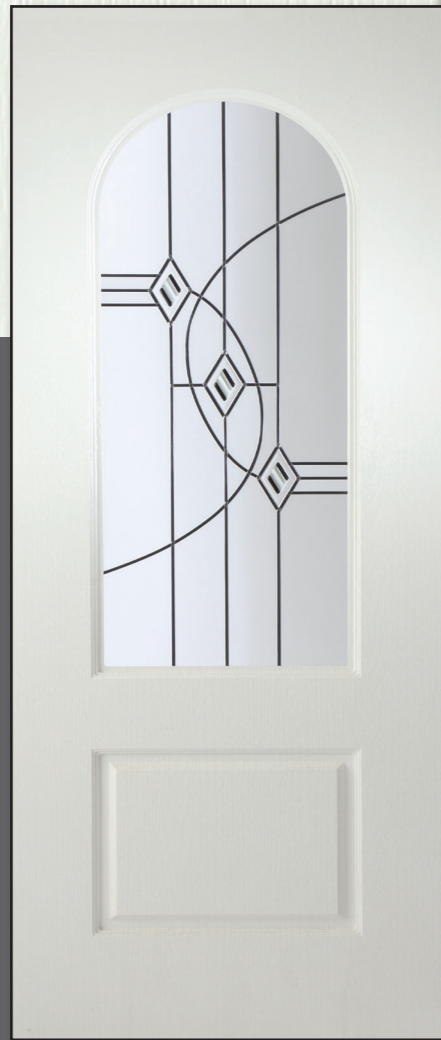
CONTEMPORARY DOOR SIZES

Width - min: 560mm max: 864mm
Height - min: 1220mm max: 2070mm

The Internal UPVc Collection

ARCHED TOP - Montrose

A combination of coloured fusion tiles, traditional antique leadwork and sandblast effect, combine to create this stunning design.



TIC SKIN



ARCHED TOP - Solid



ELIZABETHAN SQUARE TOP - Carluke

A modern design using the latest in clear fused patterned tiles along with a sandblast pattern.



ELIZABETHAN SQUARE TOP - Solid
(Solid also available in Elizabethan World)



ELIZABETHAN SQUARE TOP - Mirror
Any solid to the outer face with Elizabethan Mirror to the inner.

TIC SKIN



ARCHED TOP - Sandblast Floral Brocade



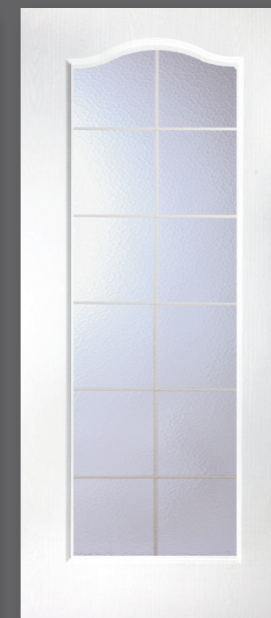
ARCHED TOP - Sandblast Regal



ARCHED TOP - Sandblast Lotus



ELIZABETHAN SQUARE TOP - Georgian Lead



ELIZABETHAN CURVE TOP - Georgian Lead



ELIZABETHAN CURVE TOP - Carluke

ARCHED TOP

ELIZABETHAN

twentyone

ARCHED TOP DOOR SIZES

Width - min: 510mm max: 864mm
Height - min: 1735mm max: 2070mm

ELIZABETHAN SQ DOOR SIZES

Width - min: 510mm max: 864mm
Height - min: 1830mm max: 2070mm

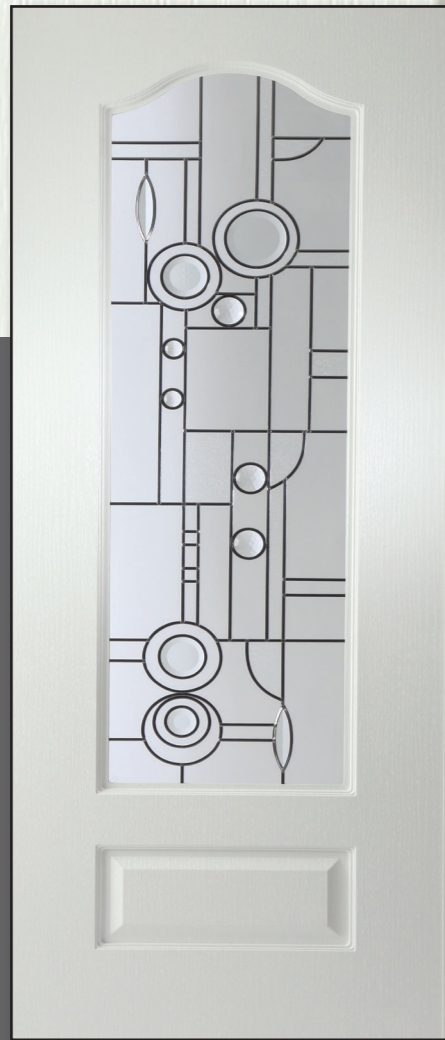
ELIZABETHAN CURVE DOOR SIZES

Width - min: 610mm max: 864mm
Height - min: 1830mm max: 2070mm

twentytwo

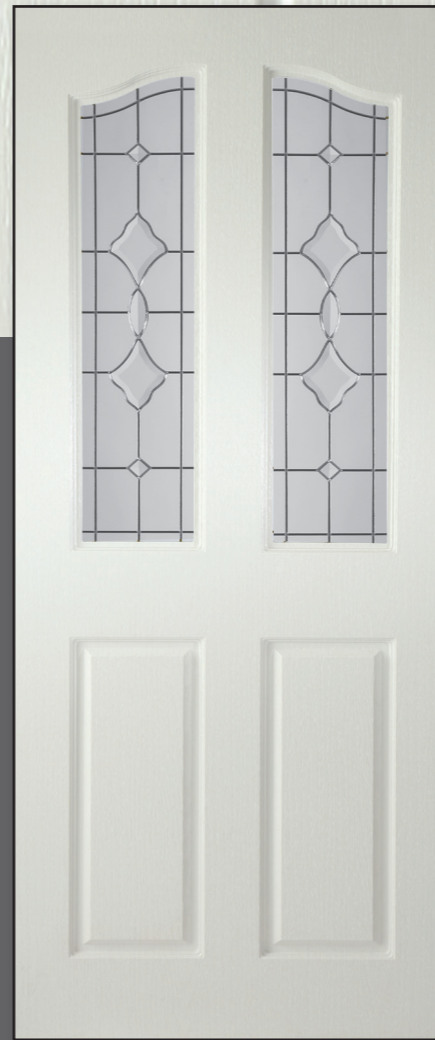
The Internal UPVc Collection

WINDSOR - Abstract Callendar
A modern abstract design.



TIC SKIN

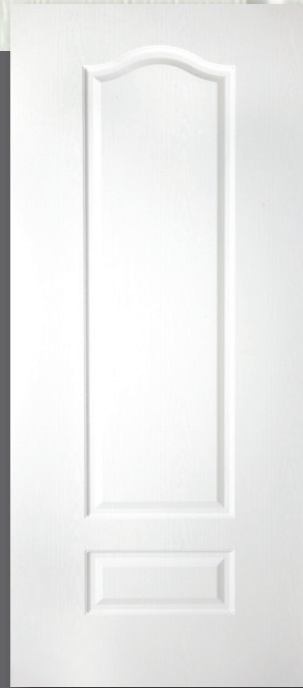
SWEPT TOP - Brechin
A stylish dual glazed door using traditional lead pattern alongside stunning glass bevels.



TIC SKIN

WINDSOR

SWEPT TOP



WINDSOR - Solid



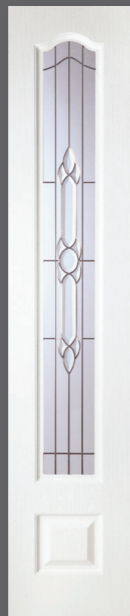
SWEPT TOP - Solid



WINDSOR - Mackintosh Greenock



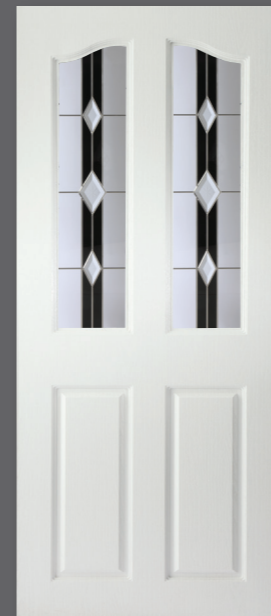
WINDSOR - Reflection



WINDSOR - Side Panel



WINDSOR - Bi-Fold



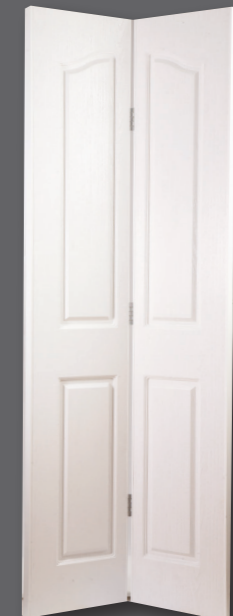
SWEPT TOP - Ebony Jet



SWEPT TOP - Kinross



SWEPT TOP - Abstract



SWEPT TOP - Bi-Fold

twentythree

WINDSOR DOOR SIZES

Width - min: 590mm max: 864mm
Height - min: 1830mm max: 2070mm

WINDSOR SIDE PANEL SIZES

Width - min: 350mm max: 589mm
Height - min: 1830mm max: 2070mm

SWEPT TOP DOOR SIZES

Width - min: 630mm max: 864mm
Height - min: 1855mm max: 2070mm

twentyfour

The Internal UPVc Collection

EDWARDIAN - Diamond Cluster
A simple, very effective design.



TIC SKIN



EDWARDIAN - Solid

SHAKER - Glenrothes
An attractive design on clear glass showing how colour can be used to enhance the door. A full spectrum of colours available.



TIC SKIN



SHAKER - Solid

EDWARDIAN

SHAKER



EDWARDIAN - Mackintosh Paisley



SHAKER - Victoriana



SHAKER - Sandblast Geneva



SHAKER - Sandblast Granville



SHAKER - Braemar

twentyfive

EDWARDIAN DOOR SIZES

Width - min: 720mm max: 864mm

Height - min: 1780mm max: 2070mm

SHAKER DOOR SIZES

Width - min: 510mm max: 864mm

Height - min: 1800mm max: 2070mm

twentysix

TIC SKIN



The Internal UPVc Collection

SAMANTHA - Solid

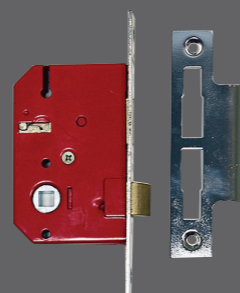
This simple and attractive door is available in solid only.

SAMANTHA DOOR SIZES

Width - min: 510mm max: 864mm
Height - min: 1830mm max: 2070mm



STABLE DOOR - Victoriana



Mortice Lock

3 Lever 2.5" mortice lock.



Smart Latch

New innovation in latch, which removes the need to notch the edge of the door.



3" Hinges

Heavy duty washer butt style.

Handles

A range of traditional and contemporary handles to complement any home.



Yvette



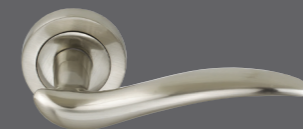
Flex



D2210BL



Mimi



Simone



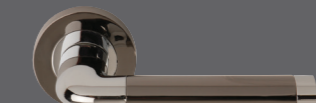
D2010DA



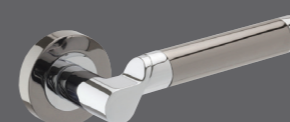
B3310D



Aura



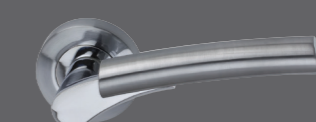
Argo



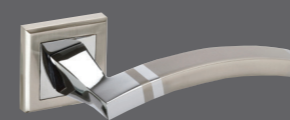
D4310DB



D4110DZ



Hettie



E6010DZ



E60 Thumb Turn

Available in other styles.



E60 Escutcheon



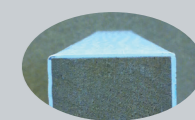
Privacy Lock

Privacy lock shown in Brass. Mainly used for bathrooms & toilets.

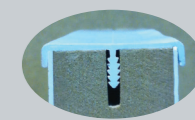


Escutcheon

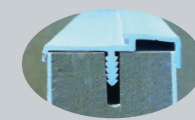
Key Escutcheon shown in Chrome.



Edge Band



Edge Strip



Hinge Strip



Shaped Doors available upon request.

Q. How are doors manufactured?

A. A 60mm subframe of MDF which allows trimming of up to 25mm per side and an extra high density polystyrene core for insulation giving six times the insulation value of a traditional interior door and improved impact resistance. The doors are finished using a 1mm UPVc plastic coating on either side. The 35mm sides of the door can either be edgebanded using white plastic or edgetrimmed by using a central groove in the door and a capped strip. The edgetrim can be flat or rebated; the rebated one will facilitate the hinge without the need for cutting out. Lock blocks are fitted centrally to both sides of the door, this eliminates potential mis-fitting of latches and other hardware.

Q. What styles are available?

A. There are currently 27 different styles available.

Q. Is there a choice of colour?

A. No.

Q. What is the maximum and minimum sizes?

A. Doors are manufactured to customers own specifications, bespoke. The max height is 2070mm (81.5in), max width is 864mm (34in), min width size is 450mm (17.75in) depending on door style. In some instances the moulds on the door will determine the size. See specifications shown for individual styles.

Q. How easy are they to fit?

A. Fitting is the same principle as a traditional wooden door using linear or metric measurements.

Q. Do you have a choice of door skin covering?

A. There are currently 2 types of skin, the traditional woodgrain effect or a tic skin (impregnated UPVc covering marked to create a grain effect).

Q. Do you need to paint the doors?

A. No. Doors are maintenance free and require only an occasional wipe down.

Q. Do the joints crack or move over time as traditional doors?

A. No. There can be no movement due to the manufacturing process.

Q. Does the door warp?

A. No. This should not be possible.

Q. I would like a set of French doors?

A. Any of our doors can be used as French doors, whether complementing the hall, conservatory entrance or separating living room from the dining room. We have a unique French door trim which requires no rebating.

Q. Do you supply handles?

A. Yes. We have options available with chrome or brass handles. We also have latches, hinges, thumb turn locks and star keys available if required.

Colours shown may vary from actual colour due to the print/photography process. We reserve the right to amend designs without prior notification.

Q. We would like to use UPVc doors for a wardrobe?

A. Doors can be adapted depending on style.

Q. Can a Loft hatch be manufactured?

A. Yes, cut to size. This will also be insulated to prevent heat loss.

Q. Is a guarantee offered?

A. Yes. A 3-year guarantee is given with internal doors from date of manufacture subject to terms and conditions, but please retain invoice.

Q. We have an awkward cupboard door, is it possible to supply?

A. Yes. Depending on size and style most openings can be accommodated. A matching grained flat panel is a good solution to this problem.

Q. Is the glass toughened on glazed doors?

A. Yes. All glass used is manufactured to 4mm and toughened to BSEN Standards, stamped with a kite mark.

Q. Are there any restrictions on glass designs?

A. No. A fully comprehensive range of designs are available as stock as seen in our brochures but individual requirements can always be discussed. Different styles of glass can be adapted to fit several types of doors, the choice is just about unlimited.

Q. Can we have obscure glass for privacy?

A. Yes. We have many types of glass available to provide various levels of privacy.

Q. Clear glass or decorative?

A. As all glass is produced in-house, virtually any options are available. By using lead and bevels in different combinations most designs can be created. We have an extensive range of coloured films and we are now producing resin lead work.

Q. Is it possible to have a Bi-fold door?

A. Yes certainly. Using 4 of the styles currently available, subject to size limitations.

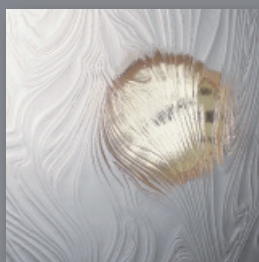
Q. Can a side panel be matched to the door?

A. Yes. Glazing can be adapted to match most doors.

Q. Is skirting board or architrave available?

A. We stock a range of PVC coated skirting, architrave, cover boards, window boards and stop latts in different sizes and widths.

Textured Glass Options



Taffeta™



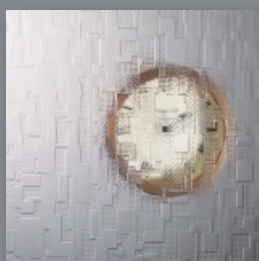
Pelerine™



Florielle™



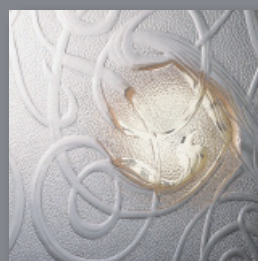
Minster™



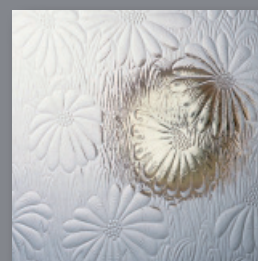
Digital™



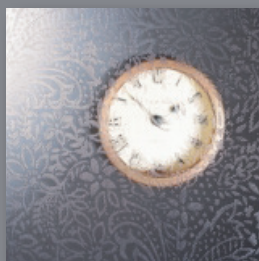
Contora™



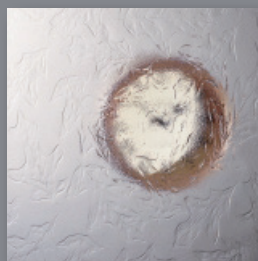
Everglade™



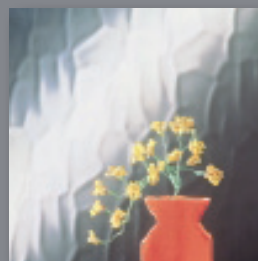
Mayflower™



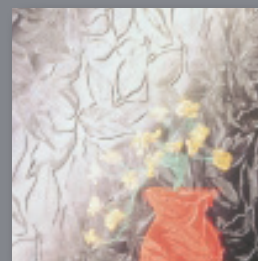
Chantilly™



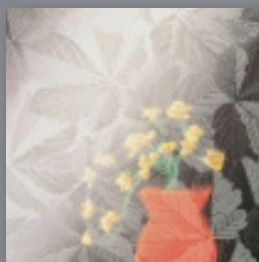
Oak™



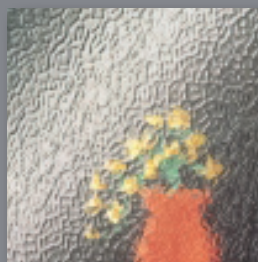
Flemish™



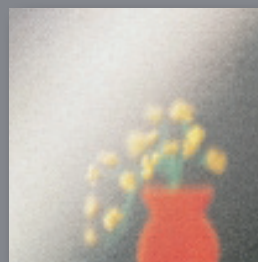
Autumn™



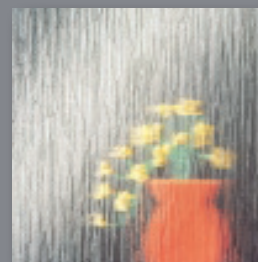
Sycamore™



Arctic™



Stippolyte™



Cotswold™

Bevel designs available on Clear, Stippolyte, Minster and Sandblast only.



All Glass featured in this brochure is toughened as standard.